

0,010 A

Attacco Pinza ER40
DIN6499

CH. 42

FORO PG13,5

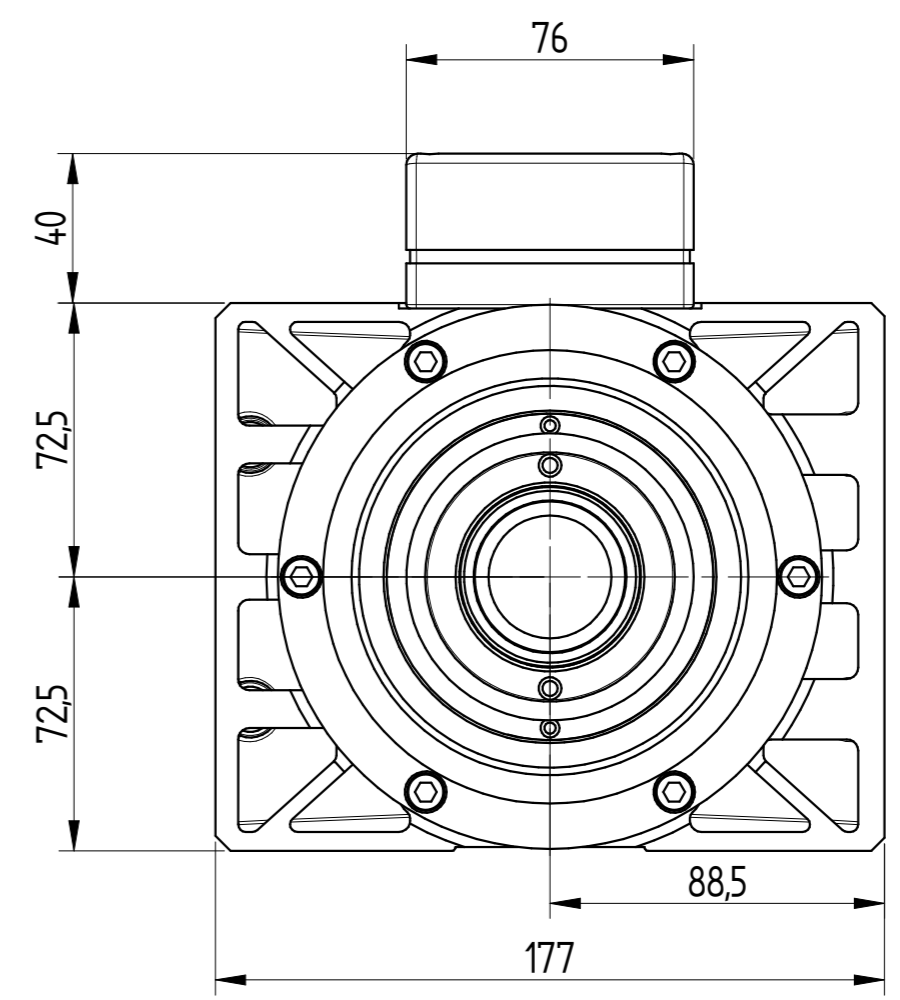
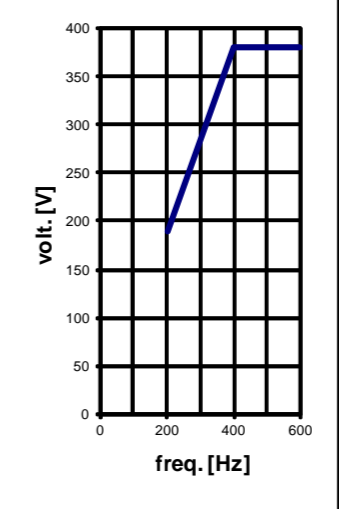
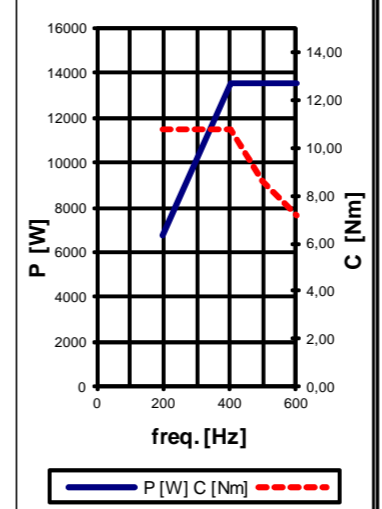
SERIAL NUMBER

MIN. 50

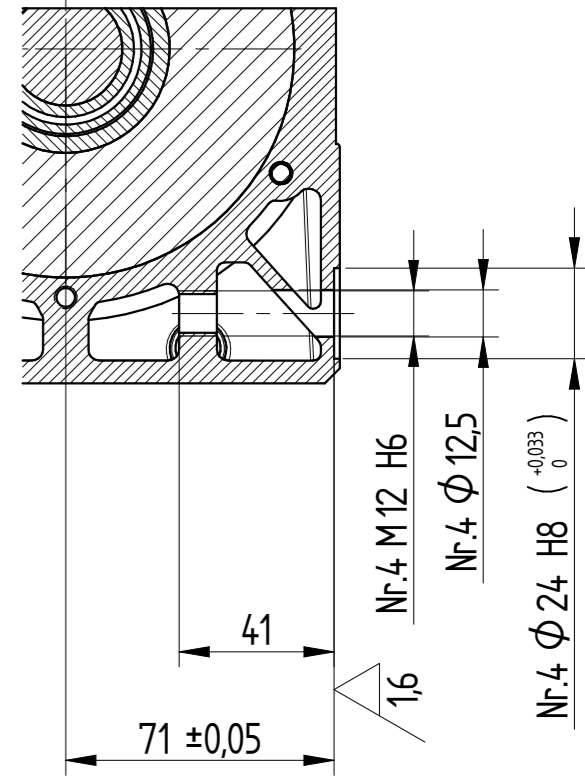
CE MARKING PLATE

DATI MOTORE E CURVE CARATTERISTICHE / PERFORMANCES AND MOTOR RATINGS

Tensione / Voltage	V ±10%	380	380	380
Potenza resa / Output Power	kW	13,5	13,5	13,5
Corrente nom. / Current	A	31	31	31
Frequenza / Frequency	Hz	400	500	600
rpm	rpm	12000	15000	18000
Coppia nom. / Torque	Nm	10,74	8,59	7,16
Cuscinetto Ant. / Front Bearing	obliquo ceramico/ angular contact ceramic			
Cuscinetto Post. / Post. Bearing	obliquo / angular contact			
Rendimento / Efficiency	η	0,83		
Fattore di potenza / Power factor	cos φ	0,73		
Numero di poli / Poles	4			
Tipo di servizio / Service type	S6 60%			
Classe di isolam. / Insulation class	F			
Raffreddamento / Cooling	Elettroventola / Electric fan			
Peso / Weight	Kg	~35		
Grado IP / Type of Protection	IP	50		



SECTION A-A



CONNESSIONI ELETTRICHE ELETTROVENTOLA / ELECTRIC FAN CONNECTIONS

Nr. Pin	Descrizione / Description
1	+ ROSSO / RED
2	- BLU / BLUE
Volt ± 10%	
Amp 960 mA	
W 23,1 W	

RIPRODUZIONE E/O DIFFUSIONE VIETATA / REPRODUCTION AND/OR DISCLOSURE OF THE DRAWING IS FORBIDDEN		-		-		-		-		-	
REV.	DESCRIZIONE REVISIONE / REVISION DESCRIPTION	N° REV	DATA / DATE	FIRMA / SIGN	HSD DIVISION		A2				
DATA	10/02/2016	PESO / WEIGHT: ~35 kg		SCALA / SCALE: 1:2		FOGLIO / SHEET: 1/1		QUOTE SENZA INDICAZIONE DI TOLLERANZA POSIZIONI WITHOUT TOLERANCE INFORMATION			
DATA		GREZZO DI / RAW:		FIRMA		LAVORAZIONI MECCANICHE / MECHANICAL WORKINGS:		SALDOCARPENTERIE / WELDMENT:			
MATERIALE / MATERIAL:		TRATTAMENTO TERMICO / HEAT TREATMENT:		RIVESTIMENTO SUPERFICIALE / SURFACE TREATMENT:		CICLO DI VERNICIATURA / PAINTING CYCLE:		DIPINTURA / PAINTING:			
DENOMINAZIONE / DESIGNATION:		MATERIALE / MATERIAL:		TRATTAMENTO TERMICO / HEAT TREATMENT:		RIVESTIMENTO SUPERFICIALE / SURFACE TREATMENT:		DIPINTURA / PAINTING:			
DIPINTURA / PAINTING:		MATERIALE / MATERIAL:		TRATTAMENTO TERMICO / HEAT TREATMENT:		RIVESTIMENTO SUPERFICIALE / SURFACE TREATMENT:		DIPINTURA / PAINTING:			

MT120-170-NE-ER40-380V-DX-12/18000-13,5KW-CA (SOST. Y616112015)

6162H0127 0